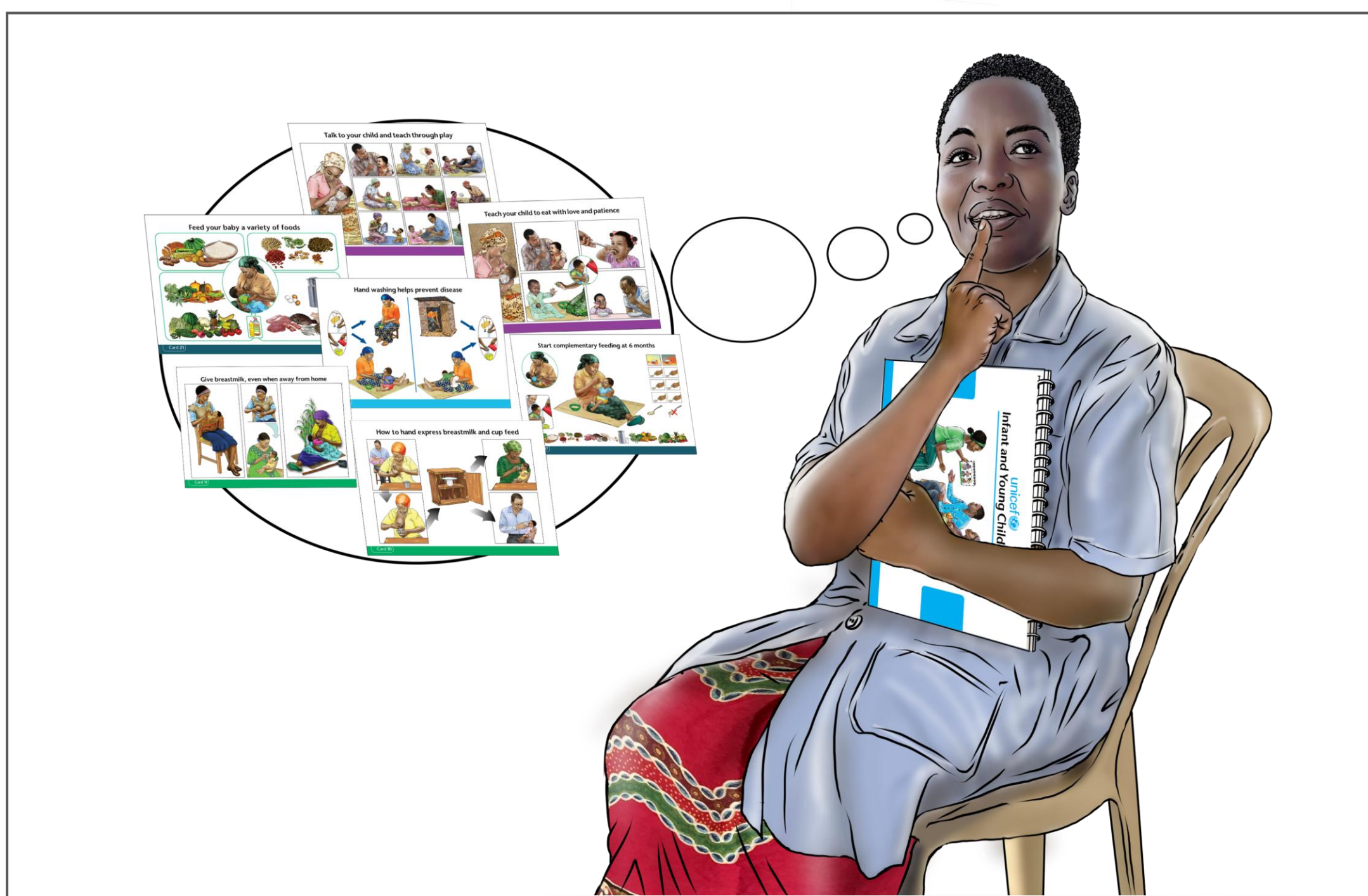


Assess, Analyse, Act (AAA)



1. Assess: Ask, observe and listen to the caregiver or group's concerns and experience with infant or young child feeding.



2. Analyse: Think about the caregiver or group's concerns and prioritize what topics and counselling cards you can share.



3. Act: Provide information, praise, and identify solutions together that the caregiver or group can try.